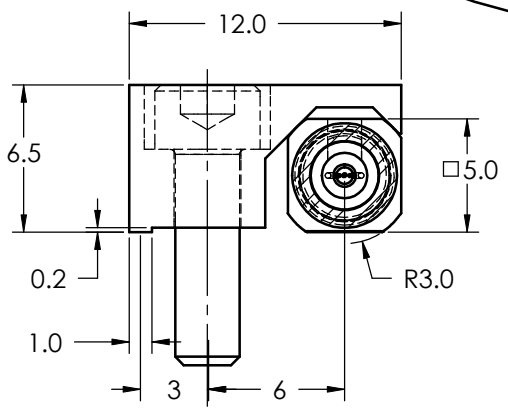
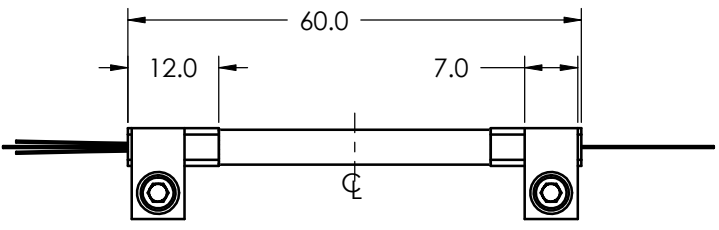
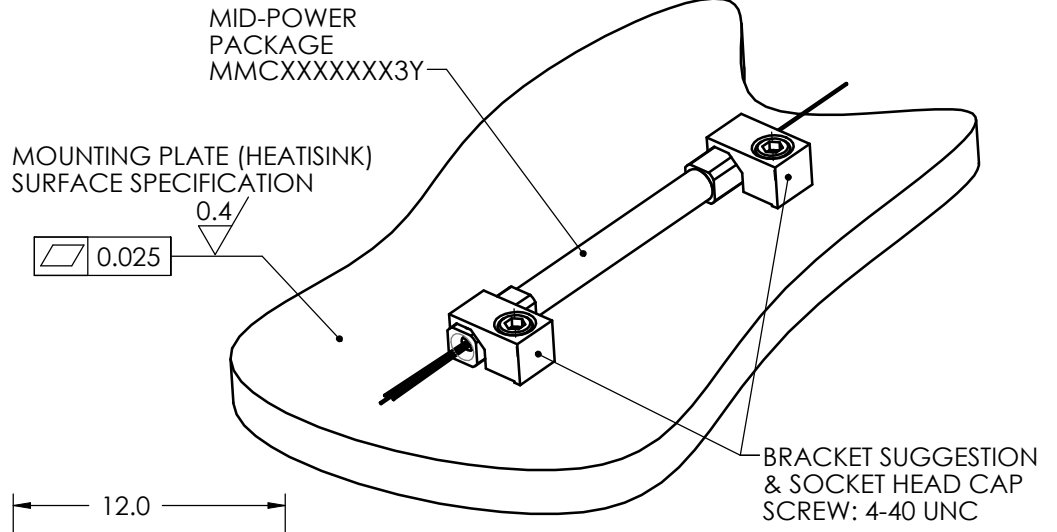
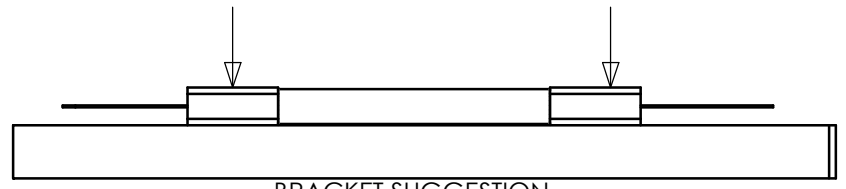


h				
REV	DESCRIPTION	DATE	RÉVISÉ	APPROUVÉ
R00-	MINOR CHANGE: ADD PACKAGE DIMENSIONS	2012/08/31	JF MOQUIN	A.WETTER

APPLIED DOWNWARD FORCE: BETWEEN 70N AND 140N



SECTION A-A
SCALE 3:1
BRACKET SUGGESTION NOT SUPPLIED

USING 2 BRACKETS AS SHOWN, ADEQUATE MOUNTING FORCE CAN BE ACHIEVED.

FOR THE SUGGESTED BRACKET & SCREW, THE RESULTING FORCE BY EACH BRACKET ON THE COMPONENT WILL BE EQUIVALENT TO APPROXIMATELY 1/3 OF THE DOWNWARD FORCE OF THE SCREW.

APPLYING THE FOLLOWING TORQUE TO THE MOUNTING SCREWS:
17 N*cm (24ozf * in)+/- 33%
WILL PRODUCE 320N (72Lb) OF DOWNWARD FORCE, IMPLYING:
1/3 * 320 = 106N (24LBS) BY EACH BRACKET

NOTES:
1- N/A

This document contains CONFIDENTIAL INFORMATION. It remains the property of ITF Labs and/or Avensys inc. and cannot be reproduced, transmitted, used or preserved without written permission. Products comply with European directive RoHS (2002/95/EC).

UNITS: mm (IN)						DESIGNED:	A.WETTER 2011-OCT-15
TOLERANCES (unless otherwise specified)						DRAWN:	A.WETTER 2011-OCT-15
	X	X.X	X.XX	X.XXX	Ang.	CHECKED:	N.HOLEHOUSE 2011-OCT-15
mm	±1	±0.5	±0.25	±0.025	±.5°	APPROVED:	DC-3151 2012-AL-03
	±.031	±.020	±.010	±.005	±.5°	THIRD ANGLE PROJECTION	
FRACTIONAL TOL. ±1/32"		GENERAL SURFACE FINISH					

ITf Labs Avensys
(514) 748-4848 www.itflabs.com
400 Montpellier, Ville St-Laurent, Qc, H4N 2G7

APPLICATION NOTE:
MOUNTING MID-POWER PACKAGE

FORMAT DWG # **10-200228-00-R00-**

SCALE: 1:2 DO NOT SCALE PRINT SHEET: 1 OF 1